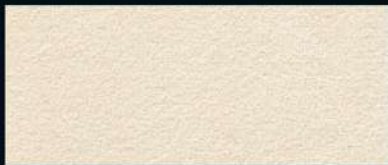


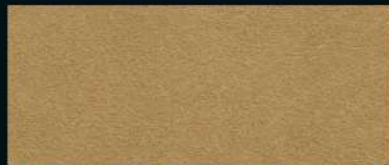
AUTOMOTIVE

**PANNEL
COVER.**

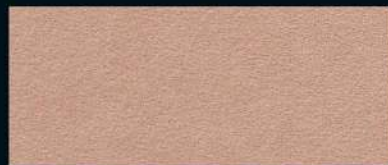
ALCANTARA



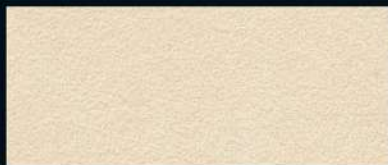
2911 perlweiß



1125 (2970) karamell



1510 perlrosa



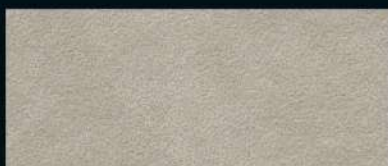
2984 helios



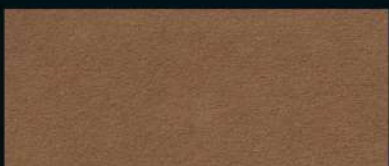
2940 moccasin



1108 sand rose



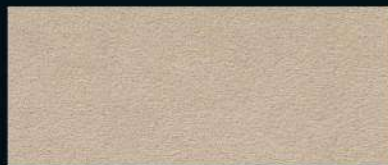
2901 champignon



4914 sienna



2969 mango



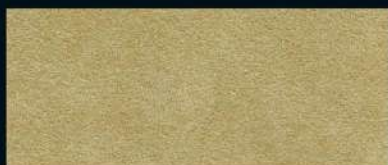
2909 natur hell



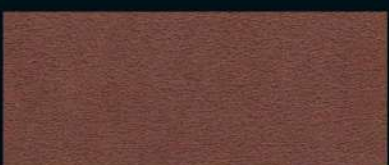
4930 haselnuß



4996 rot



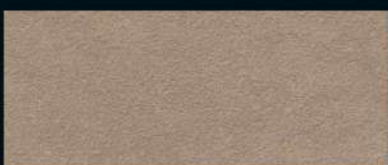
1110 amber glow



4097 rust



2916 rubin



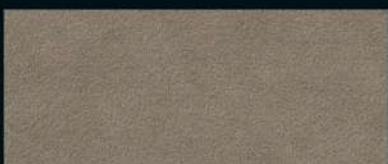
2974 java



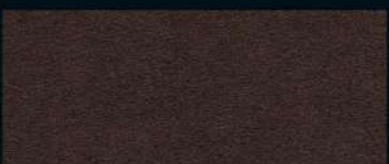
2910 schoko



9076 weinrot



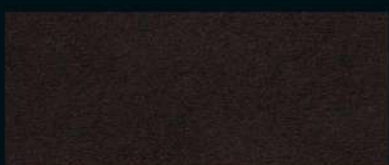
1112 (2920) pergament



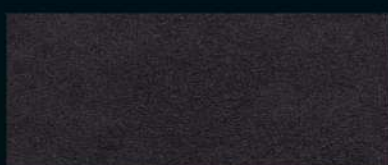
6833 raw amber



9036 aubergine



9500 dunkelbraun



9008 brombeer



2932 mausgrau



4978 silbergrau hell



2938 basalt



4175 hellblau



2934 oriongrau



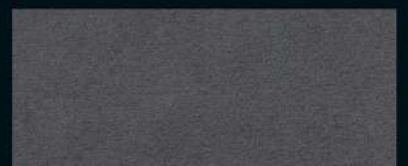
2942 sandgrau



9022 tobago



1452 (2951) lemongelb



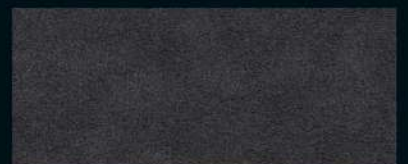
2957 schiefer



7586 kobalt



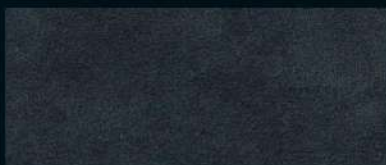
9073 smaragd



9052 dunkelgrau



6408 (9055) signalblau



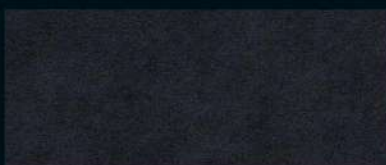
6406 tiefgrün



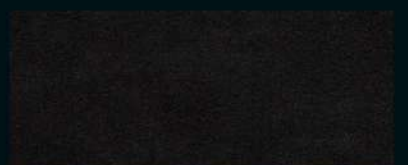
9002 schwarz



9041 stahlblau



9980 tiefblau



9040 tiefschwarz

Alle nicht perforierten Farben sind in den Qualitäten cover und pannel lieferbar.
All non perforated colours are deliverable in cover and pannel.

Lochperforation/
Round perforation



2974.B1 java

Kästchenperforation/
Square perforation

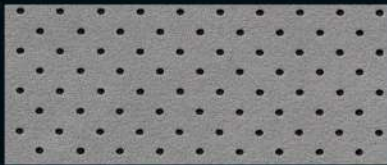


2974.S2 java

Starlite/
Round perforation



4978.STL silbergrau hell



2934.B1 oriongrau



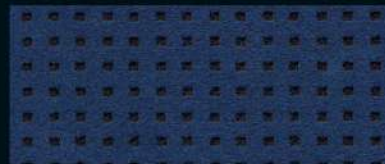
2934.S2 oriongrau



9052.STL dunkelgrau



6408.B1 signalblau



6408.S2 signalblau



9040.STL tiefschwarz



9002.B1 schwarz



9002.S2 schwarz

Alle anderen Farben in jeder Perforation sind lieferbar ab 50 lfm.
All other colours in each perforation are deliverable from 50 m.



Wasserlösliche Flecken

Zur Reinigung von Alcantara® wird empfohlen, die dafür vorgesehenen Produkte zu verwenden, deren Liste Sie auf der Website www.alcantara.com unter „Wartung“ finden. Sollten diese Produkte nicht zur Verfügung stehen, wird je nach Fall die Verwendung von Wasser, Zitronensaft oder reinem Ethylalkohol (Weingeist) empfohlen. Die diesbezüglichen Reinigungsverfahren sind nachstehend beschrieben. Für weitere Informationen besuchen sie bitte unsere Website unter www.alcantara.com

Water-soluble stains

It is recommended that you use the specific products for Alcantara® cleaning, a list of which is available on www.alcantara.com in the section maintenance; if they are not at your disposal, it is recommended, depending on the type of stain, that you should use water, lemon juice, or pure ethyl alcohol (from liquors) and follow the instructions below. For further information visit our web site www.alcantara.com

Tâches solubles dans l'eau

Il est conseillé d'utiliser des produits spécifiques pour le nettoyage d'Alcantara®, dont vous trouverez la liste sur le site www.alcantara.com dans la section entretien. A défaut de produits, il est préférable d'utiliser, selon le cas, de l'eau ou du jus de citron, ou encore de l'alcool éthylique pur (pour liqueurs) et suivre les procédures indiquées ci-dessous. Pour plus d'information, merci de visiter notre site internet www.alcantara.com

Macchie solubili in acqua

E' consigliato l'impiego di prodotti specifici per la pulizia di Alcantara®, un elenco dei quali è riportato nel sito www.alcantara.com nella sezione manutenzione; nel caso non si disponga di questi, è consigliato a secondo dei casi, l'impiego di acqua, oppure succo di limone, oppure alcol etilico puro (da liquori) e seguendo le procedure di seguito indicate. Per maggiori dettagli visita il nostro sito web www.alcantara.com

Fruchtsäfte, Marmelade, Gelatine, Sirup, Ketchup.	Mit lauwarmem Wasser auswaschen und mit sauberem Wasser ausspülen und abtupfen.
Blut, Eier, Kot und Urin.	Mit kaltem Wasser auswaschen. Warmes Wasser, das diese Substanzen gerinnen lässt, sollte vermieden werden. Mit sauberem Wasser ausspülen und abtupfen.
Liköre, Wein, Bier, Cola und Tee.	Mit lauwarmem Wasser auswaschen. Farbige Flecken sollten mit Zitronensäure behandelt werden. Gut ausspülen.
Kopierstift, Kakao, Schokolade, Creme- und Schokoladensüßigkeiten, Eis, Senf.	Mit lauwarmem Wasser auswaschen. Mit sauberem Wasser ausspülen und abtupfen.
Essig, Haargel, Tomatensoße, gezuckerter Kaffee.	Mit Zitronensäure behandeln und mit lauwarmem Wasser auswaschen. Mit sauberem Wasser ausspülen und abtupfen.

Fruit juice, jam, jelly, syrup, ketchup.	Use lukewarm water, rinse by dabbing with clean water.
Blood, egg, excrement, urine.	Use cold water; avoid warm water because it makes these substances coagulate, rinse by dabbing with clean water.
Liquors, alcoholic beverages, wine, beer, coke and tea.	Use lukewarm water, if the colour mark remains, treat it with lemon juice and then rinse it well.
Copying pencil, cocoa, chocolate, pastry with cream or chocolate, ice-cream, mustard.	Use lukewarm water, rinse by dabbing with clean water.
Vinegar, hair gel, tomato juice, coffee with sugar.	Use lemon juice and then wipe with lukewarm water, rinse by dabbing with clean water.

Jus de fruit, confiture, gélatine, sirop, ketchup.	Utilisez de l'eau à peine tiède; rincez en tamponnant avec de l'eau claire.
Sang, œuf, selles et urines.	Utilisez de l'eau froide; évitez l'eau chaude qui pourrait faire coaguler ces substances; rincez en tamponnant avec de l'eau propre.
Liqueurs, vin, bière, cola et thé.	Utilisez de l'eau à peine tiède; si la tâche résiste, traitez-la avec du jus de citron et rincez abondamment.
Crayon à encre, cacao, chocolat, gâteaux à la crème et au chocolat, glace, moutarde.	Utilisez de l'eau à peine tiède; rincez en tamponnant avec de l'eau propre.
Vinaigre, gel pour cheveux, sauce tomate, café sucré.	Utilisez du jus de citron puis repassez avec de l'eau à peine tiède; rincez en tamponnant avec de l'eau propre.

Succo di frutta, marmellata, gelatina, sciroppo, ketchup.	Usare acqua appena tiepida; risciacquare tamponando con acqua pulita.
Sangue, uovo, feci e urina.	Usare acqua fredda; evitare l'acqua calda che fa coagulare queste sostanze; risciacquare tamponando con acqua pulita.
Liquori alcolici, vino, birra, coca e the.	Usare acqua appena tiepida; se resta la chiazza di colore trattarla con succo di limone e poi sciacquare bene.
Matita copiativa, cacao, cioccolata, dolci alla crema e al cioccolato, gelato, senape.	Usare acqua appena tiepida; risciacquare tamponando con acqua pulita.
Aceto, gel per capelli, salsa di pomodoro, caffè con zucchero.	Usare succo di limone e poi ripassare con acqua appena tiepida; risciacquare tamponando con acqua pulita.

Alcantara® Pannel 41 FARBEN / COLOURS

			5012	5256	
COMPOSITION	ALCANTARA®	POLYESTER	68	68	%
		POLYURETHANE	32	32	%
THICKNESS			0,83	0,85	mm
UNIT WEIGHT		UNI EN 29073-1	230	285	g/m ²
WIDTH			≥ 142	≥ 142	cm
BREAKING LOAD	lengthwise transversal	UNI EN 29073-3	≥ 220	≥ 220	N
		UNI EN 29073-3	≥ 170	≥ 170	N
WEAR RESISTANCE	martindale	UNI EN ISO 12947-1/2/3/4	≥ 30,000	≥ 30,000	cycles*
			≥ 150,000	≥ 150,000	cycles**
COLOUR FASTNESS					
TO LIGHT	xenotest Beta	VDA 75202 (2 FAKRA)	≥ 3	≥ 3	grey scale
TO RUBBING	dry	UNI EN ISO 105-X12	≥ 4	≥ 4	white scale
	wet	UNI EN ISO 105-X12	≥ 3/4	≥ 3/4	white scale
FR VERSION	fire resistance	FMVSS 302		< 100	mm/min

* no significant change in surface appearance

** end point

Alcantara® Pannel is also available in the version Flame Retardant (FR), comply with the directive 95/28 CE.

FR product code: 5256**Alcantara® Cover** 41 FARBEN / COLOURS

			5205	5267		
COMPOSITION	ALCANTARA®	POLYESTER	68	68	%	
		POLYURETHANE	32	32	%	
		backing	POLYESTER	65	65	%
			COTTON	35	35	%
THICKNESS			≥ 0,95	≥ 0,95	mm	
UNIT WEIGHT		UNI EN 29073-1	≥ 325	≥ 400	g/m ²	
WIDTH			≥ 142	≥ 142	cm	
BREAKING LOAD	lengthwise transversal	UNI EN 29073-3	≥ 700	≥ 700	N	
			≥ 400	≥ 400	N	
WEAR RESISTANCE	martindale	UNI EN ISO 12947-1/2/3/4	≥ 30.000	≥ 30.000	cycles*	
			≥ 150.000	≥ 150.000	cycles**	
COLOUR FASTNESS						
TO LIGHT	xenotest Beta	VDA 75202 (2 FAKRA)	≥ 3	≥ 3	grey scale	
TO RUBBING	dry	UNI EN ISO 105-X12	≥ 4	≥ 4	white scale	
	wet	UNI EN ISO 105-X12	≥ 3/4	≥ 3/4	white scale	
COHESION		UNI EN ISO 2411	≥ 10	≥ 10	N	
FR VERSION	fire resistance	FMVSS 302		< 100	mm/min	

* no significant change in surface appearance

** end point

Alcantara® Cover is also available in the version Flame Retardant (FR), comply with the directive 95/28 CE.

FR product code: 5267

Alcantara® Exo – 9604 exo SCHWARZ/BLACK

THICKNESS			≤ 1,3	mm
UNIT WEIGHT		EN 29073-1	≥ 310	g/m ²
WIDTH			≥ 142	cm
DIMENSIONAL STABILITY	water 40°C	EN 25077, EN ISO 6330	≤ 3	%
BREAKING LOAD	lengthwise	EN ISO 29073-3	≥ 600	N/5cm
	crosswise	EN ISO 29073-3	≥ 400	N/5cm
ELONGATION AT 50 N	lengthwise	EN ISO 13934-1	≥ 2,5	%
	crosswise	EN ISO 13934-1	≥ 6	%
TEAR RESISTANCE	lengthwise	EN ISO 13937-3	≥ 30	N
	crosswise	EN ISO 13937-3	≥ 30	N
MARTINDALE ABRASION 12kPa		EN ISO 12947-4	≥ 20.000*	cycles
	end point	EN ISO 12947-2	≥ 150.000	cycles
WATER IMPERMEABILITY		EN 20811	≥ 2	meters H ₂ O
WATER VAPOR PERMEABILITY		UNI 4818/26	≥ 300	gr/m ² day
COHESION		EN ISO 2411	≥ 10	N
RESISTANCE TO PILLING	2000 cycles	EN ISO 12945-2	≥ 4,5	
COLOUR FASTNESS**				
TO LIGHT		EN ISO 105-B02	≥ 7	blue scale (1-8)
		ASTM G154-06	≥ 3,5	grey scale (1-5)
TO RUBBING	dry	EN ISO 105-X12	≥ 4	white scale (1-5)
	wet	EN ISO 105-X12	≥ 3	white scale (1-5)

* slight change in the appearance of product surface

** shade variations, due to the process technology, are possible on this quality

Alcantara® Multilayer – 9040 ML SCHWARZ/BLACK

COMPOSITION	ALCANTARA	POLYESTER	71 ± 4	%
		POLYURETHANE	29 ± 4	%
THICKNESS			1,2 ± 0,2	mm
UNIT WEIGHT		EN 29073-1	390 ± 60	g/m ²
WIDTH			142	cm
BREAKING LOAD	lengthwise	EN ISO 13934-1	600	N/5cm
	crosswise	EN ISO 13934-1	400	N/5cm
TEAR RESISTANCE	lengthwise	EN ISO 13937-3	30	N
	crosswise	EN ISO 13937-3	30	N
MARTINDALE ABRASION 12kPa		EN ISO 12947-4	20.000*	cycles
	end point	EN ISO 12947-2	150.000	cycles
COHESION		EN ISO 2411	12	N
COLOUR FASTNESS**				
TO LIGHT		VDA 75202	3	grey scale (1-5)
TO RUBBING	dry	EN ISO 105-X12	4	white scale (1-5)
	wet	EN ISO 105-X12	3	white scale (1-5)

* slight change in the appearance of product surface

** shade variations, due to the process technology, are possible on this quality



Hans Reinke
Handelsgesellschaft mbH

Brandstücken 20 Tel. +49 40 39 1068-0
22549 Hamburg Fax +49 40 39 1068-29
info@hans-reinke.com www.hans-reinke.com

HOLLAND, BELGIUM & LUXEMBOURG



Hans Reinke Benelux B.V.

D'n Oliepint 2 Tel. +31 13 505 6702
5081 NT Hilvarenbeek Fax +31 13 505 3073
Netherlands info@hans-reinke.nl

SWITZERLAND & AUSTRIA



Jörg & Reinke GmbH

Bahnhofstraße 42 Tel. +41 34 402 5005
CH-6162 Fax +41 34 402 55 53
Entlebuch info@joerg-leder.ch

POLAND



Automotive Textiles

Jakub Ponczyński Tel. +48 42 288 10 10
93-490 Łódź Mob.+48 513 014 610
Pabianicka 119/131 jakub@ponczynski.com

ALCANTARA

Via Mecenate, 86 • 20138 Milano, Italy
Tel: +39 02 580301 • Fax: +39 02 58030451
info@alcantara.com • www.alcantara.com

Alcantara®
is a registered trademark
of Alcantara S.p.A.