

Nappa I

| vollnarbig, *full grain*

| Porsche, MB

Nappa für Porsche



1246 crema



1224 boxsterrot



1257 indisch rot



1266 mojavebeige



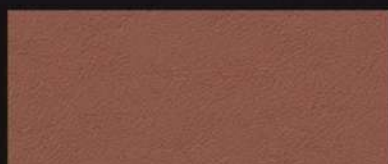
1240 terracotta



1222 flamencorot



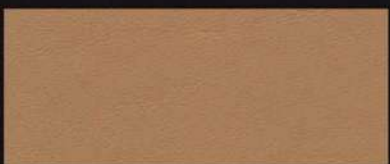
1248 luxorbeige



1232 zimtbraun



1263 bordeaux



1241 kaschmirbeige



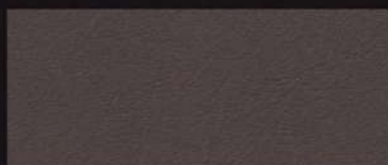
1252 tartufo hell



1211 magenta



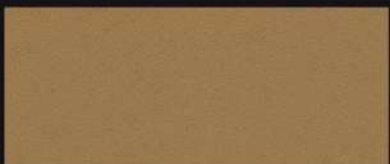
1233 sandbeige



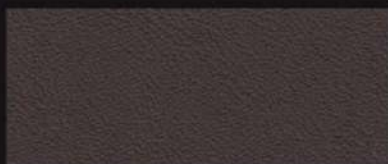
1254 umbra



1247 marsalarot



1227 savannabeige



1256 sattelbraun



1258 acidgreen



1237 havanna



1239 cocoa Braun (2-Ton)



1223 cedargrün



1267 titanblau



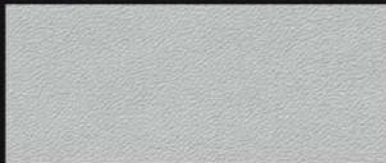
1218 lichtgrau



1259 silber



1220 maritimblau



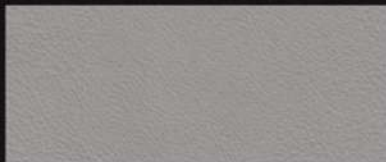
1253 kieselgrau



1245 platingrau



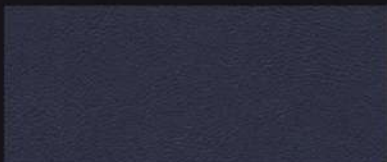
1217 nachtblau



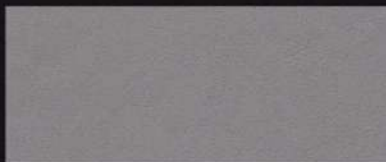
1262 kreide



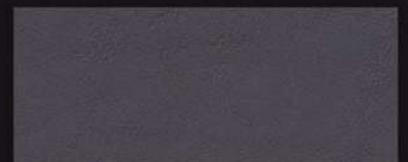
1215 klassikgrau



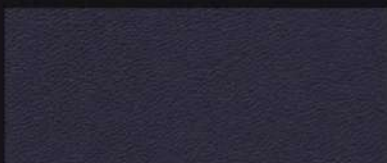
1244 yachtingblau



1221 marmorgrau



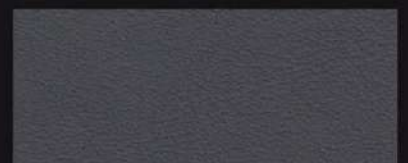
1235 steingrau



1205 kobaltblau



1234 stahlgrau



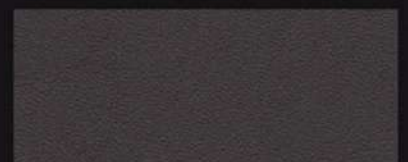
1265 schiefergrau



1238 seeblau



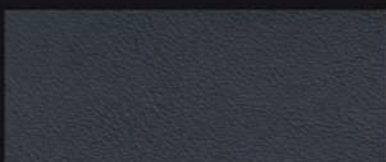
1226 graffitigräu



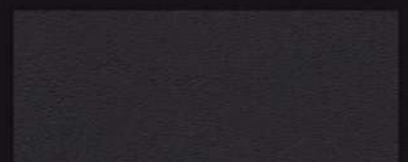
1255 achatgräu



1229 metropolbläu



1264 graphitbläu

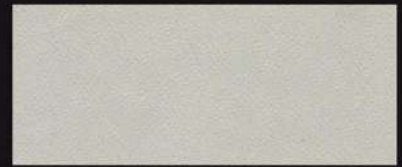


1201 schwarz

Nappa für MB



1180 kiesel



1198 greige



1163 signalweiß



1174 helios



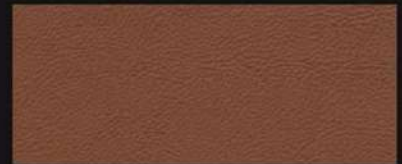
1190 savannenbeige/*landscape*



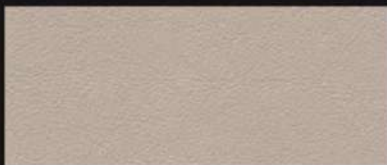
1194 porzellan/*porcelain*



1156 champignon/*hellbeige*



1178 hellbraun/*light brown*



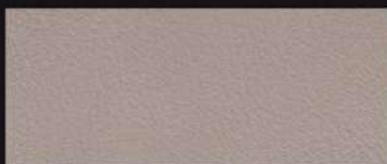
1189 saharabeige/*comobeige*



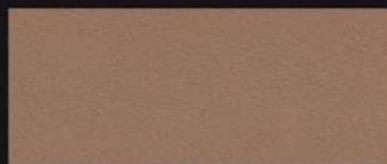
1186 kaschmirbeige/*buckskin*



1181 berryrot



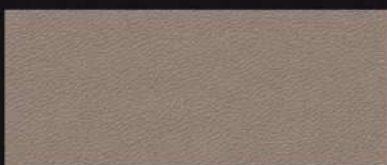
1185 seidenbeige/*silk*



1160 sand



1188 classicrot



1158 mandelbeige/*almond beige*



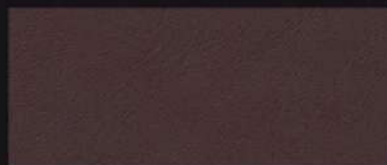
1195 nußbraun/*nut brown*



1193 bengalrot



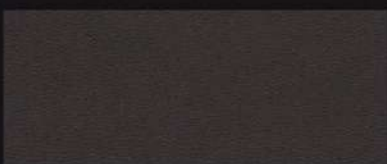
1157 stein mittel



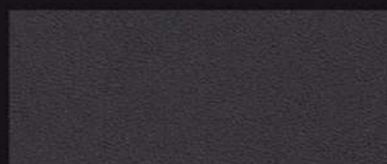
1179 dunkelbraun/*dark brown*



1187 sunsetrot/*amarorot*



1196 moccabraun/*mocha brown*



1162 espressobraun



1165 satinrot pearl



1199 kristallgrau



1177 silber metallic



1182 alpacagrau



1175 oriongrau



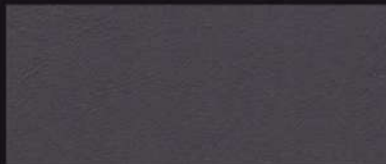
1152 grau



1197 riffgrau



1153 basaltgrau/grau mittel



1184 graphit



1159 linaritblau



1155 blau



1173 tiefseeblau/*deepsea blue*



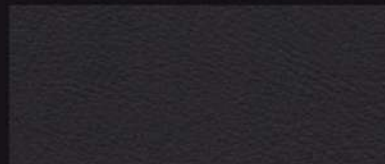
1164 muschelgrau



1161 titangrau pearl



1154 anthrazit

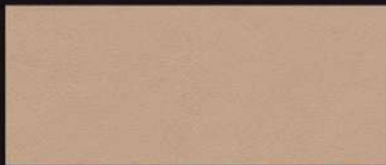


1151 schwarz/*black*

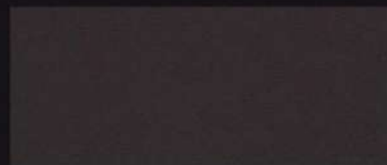


1980 tiefschwarz glänzend

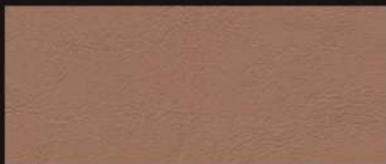
Naturleder für Porsche



1251 zeder



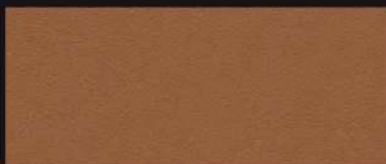
1249 espresso



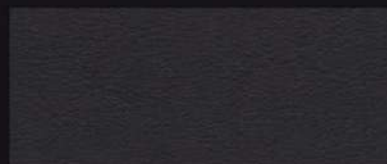
1250 cognac



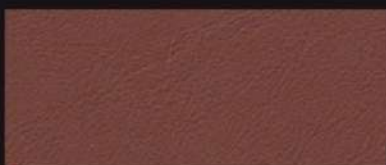
1260 tarpanbraun



1230 braun



1231 dunkelgrau



1243 kastanienbraun



1261 schwarz



1242 carrerarot/granatrot

Technische Werte/ technical specifications	Meßmethode/ test methods	Werte/ values
Stärke/ <i>strength</i>	DIN 53326	1,0 mm - 1,4 mm
Flächengewicht/ <i>mass per unit area</i>	DIN 53327	620 - 980 g/qm
Dehnungsprüfung/ <i>tension test</i> Höchstzugkraft/ <i>tensile test</i> Bruchdehnung/ <i>breaking elongation</i>	DIN 53328 Probekörper 2/ <i>specimen 2</i> Probekörper 2/ <i>specimen 2</i>	> 120 N 35 - 70 %
Weiterreißkraft/ <i>tear strength</i> längs/ <i>length</i> quer/ <i>across</i>	DIN 53329/A DIN 53329/B	> 25 N > 20 N
Dauerknickverhalten/ <i>flexion</i> längs/ <i>length</i> quer/ <i>across</i>	DIN 53351	20.000 Knickungen/ <i>flexes</i> : keine Rissbildung bei 6-facher Vergrößerung / <i>no cracks at 6 times magnifying</i>
Dauerverhalten nach 1 Zyklus belichten/ <i>flexion after aging 1 period</i>		10.000 Knickungen/ <i>flexes</i> : keine Rissbildung bei 6-facher Vergrößerung / <i>no cracks at 6 times magnifying</i>
Wasserdampfdurchlässigkeit/ <i>water vapour permeability</i>	DIN 53333	1,0 mg/qcm
Reibechtheit/ <i>rub fastness</i> trocken/ <i>dry</i> nass/ <i>wet</i> nass nach Wasserlagerung/ <i>wet after storage in water</i>	DIN EN ISO 11640	4 - 5 Note/class 4 - 5 Note/class 4 - 5 Note/class
Schweißlösung/ <i>sweat</i>		4 - 5 Note/class
Haftung der Zurichtung/ <i>topcoat adhesion</i>		3,5 N/cm
Heißlichtechtheit/ <i>hotlight fastness</i>	DIN 75202	5 - 7 Stufe Blauskala/ <i>class blue scale</i>
Brennprüfung/ <i>flammability</i>	FMVSS 302	< 100 mm/min
Geruchsprüfung/ <i>smelling test</i>	VDA 270 C3	< 3 Note/class

Kollektionsmuster sind keine Urmuster. Kleine Farbabweichungen sind möglich.
Swatches are no master samples. Small differences may occur.



Hans Reinke
Handelsgesellschaft mbH

Brandstücken 20 Tel. +49 40 39 1068-0
22549 Hamburg Fax +49 40 39 1068-29
info@hans-reinke.com www.hans-reinke.com

HOLLAND, BELGIUM & LUXEMBOURG



Hans Reinke Benelux B.V.

D'n Oliepint 2 Tel. +31 13 505 67 02
5081 NT Hilvarenbeek Fax +31 13 505 30 73
Netherlands info@hans-reinke.nl

SWITZERLAND & AUSTRIA



Jörg & Reinke GmbH

Bahnhofstraße 42 Tel. +41 34 402 50 05
CH-6162 Fax +41 34 402 55 53
Entlebuch info@joerg-leder.ch

POLAND



Automotive Textiles

Jakub Ponczyński Tel. +48 42 288 10 10
93-490 Łódź Mob. +48 513 014 610
Pabianicka 119/131 jakub@ponczynski.com